

Tubular Running Services

About Us:

SAKNAFTA® Tubular Services Are Committed to deliver the safest and most efficient services to our client with advanced, comprehensive tubular solutions backed by a group of experts.

SAKNAFTA® offers its clients a comprehensive casing and handling packages that consists but not limited to spiders, elevators, tongs, FMS units, side door, protectors, stabbing guides, Slip type slips and elevators, rotary hand slips, non-marking jaws, computerized monitoring and torque turn system to run premium connections and corrosion resistant alloys (CRA) and related casing accessories with complete greasing products.

SAKNAFTA® outstanding maintenance program to the tools and equipment is fundamental to ensuring safe operations to its clients. Our tubular running services are designed to guarantee safety and facilitate effectiveness of tubular running operation, which contributes to the reduction of risk and worksite incidents.

Furthermore, our advanced tubular running tools are in compliance with the global standards of API and ISO and are operated by qualified personnel to guarantee maximum service quality and efficient results. Our skilled personnel undergo the highest training programs to ensuring optimal productivity in workplace.





Our Mission

Is to assure the continuous improvement of standards and operations set by SAKNAFTA EGYPT to the benefit of the company and, most importantly, to meet the customer's requirements and expectations.

Our Vision:



To be the preferred service provider in the drilling industry and deliver value to our customers and shareholders through country class leadership.

We seek to achieve this by continuously improving the behaviors.

Health, Safety & Environmental Policy

We strictly committed to always develop and maintain a premier health and safety culture for all parties associated with the company.

Health, Safety and Environment are the core of the company value and are equal importance to meet customer requirements and operating tasks.

Safety is equal to any operation and in case of conflict safety will be always the first priority.

Injury free is our main target to achieve at all company work places.

Supervisors are responsible to maintain the health and safety of all personnel as they direct work and other related activities.

Employees have a responsibility to eliminate at risk behavior in themselves and others.

Safety happens by choice, not by chance.



Equipment List

Hydraulic Power Tong

- SAKNAFTA® casing power tongs are Selected to suit high torque casing, providing maximum torque with reliable performance. We provide a full range of casing sizes to meet the varying needs of each client.
- **CANADA Origin**

McCoy and Farr KT13625 - 13-5/8" CASING TONG SPECIFICATIONS

Description	Specification
Size range	3-1/2" to 13-5/8"
Hydraulic power supply	2,750 psi and 60 gpm (18.96 MPa and 227.1 lpm)
Maximum low gear torque and speed	35,640 ft.-lb. and 10 rpm
Maximum high gear torque and speed	7,130 ft.-lb. and 48 rpm
Torque handle length	36" (91.4 cm)
Overall length (Doors closed)	59-1/4" (150.5 cm)
Overall width	33" (83.8 cm)
Overall height	47" (119.4 cm)
Overall weight	1,550 lb. (705 Kg)

Backups:

- FARR Cam Style 13625

Jaws and Dies:

Wraparound or Dovetail jaws
Fine Tooth Steel or GRITFACE® dies

Accessories:

- Lift cylinder or spring hanger
- Load cell/Torque gauge



- SAKNAFTA® tubing tongs have been selected to meet the highest torque required for breaking premium connections. These tongs handle tubing sizes ranging from 2 5/8" to 7 5/8".
- **CANADA Origin**

FARR KT7625 - 7-5/8" CASING and TUBING TONG WITH BUC7625 BACKUP SPECIFICATIONS

Description	Specification
Size range	2-3/8" to 7-5/8"
Maximum low gear torque and speed	30,000 ft.-lb. and 7 rpm
Maximum high gear torque and speed	3,500 ft.-lb. and 42 rpm
Torque handle length	52" (132.1 cm)
Overall length (without Backup)	71-1/2" (181.6 cm)
Overall width (without Backup)	55" (139.7 cm)
Overall height (without Backup)	29-3/4" (75.6 cm)
Overall weight (without Backup)	2,100 lb. (952 Kg)

Backups:

- Compression or Tension 7625
- Compression or Tension 8625

Jaws and Dies:

Wraparound or Dovetail jaws

- Low friction jaws available

Wraparound or Dovetail dies

- Fine Tooth Steel, GRITFACE® or Aluminum

Accessories:

- Lift cylinder or spring hanger
- Load cell/Torque gauge



Mccoy and FARR KT5500 - 5-1/2" TUBING TONG SPECIFICATIONS CANADA Origin

Description	Specification
Size range	2-1/16" to 5-1/2"
Hydraulic power supply	2,500 psi and 60 gpm (17.2 MPa and 227.1 lpm)
Maximum low gear torque and speed	18,894 ft.-lb. and 16.1 rpm
Maximum high gear torque and speed	3,780 ft.-lb. and 80.5 rpm
Torque handle length	36" (91.4 cm)
Overall length (Doors Closed)	52" (132.1 cm)
Overall width	25-1/2" (64.8 cm)
Overall height	33-1/4" (84.5 cm)
Overall weight	1,250 lb. (568.2 Kg)

Backups:

- CLINCHER® Compression or Tension 5500

Jaws and Dies:

Wraparound or Dovetail jaws

Fine Tooth Steel or GRITFACE® dies

Accessories:

- Lift cylinder or spring hanger
- Load cell/Torque gauge
- CHROMEMASTER™



SARA 20" HYDRAULIC CASING POWER TONG

Description	Specification
Size range	9-5/8" to 20"
Hydraulic power supply	2,500 psi and 60 gpm (17.2 MPa and 227.1 lpm)
Maximum low gear torque and speed	35,000 ft.-lb. and 8 rpm
Maximum high gear torque and speed	8,300 ft.-lb. and 54 rpm
Torque handle length	48"
Overall length (Doors Closed)	76"
Overall width	43"
Overall height	33-1/4" (84.5 cm)
Overall weight	2,800 lb.

- Maximum torque of 35000 ft-lbs.

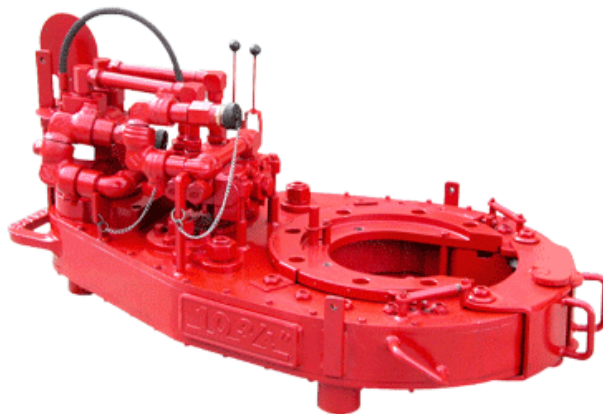
- Maximum RPM at 65 GPM :

High: 54 RPM.

Low: 8 RPM.

- Jaws available for casing sizes: 9-5/8", 13-3/8" and

20"



CRA Tubulars

We offer non-marking jaws and dies to handle and save the premium tubing string and corrosion resistant alloys (CRA).



GRITFACE® coating for tong dies and handling tool inserts is the choice of energy service companies around the world. Economical and proven to work, this innovative coating gives you the following benefits:

- Protects tubulars with minimal marking—the typical indentation depth is 0.004" to 0.006", less than half of API allowable surface defect depth
- Eliminates linear stress risers that reduce fatigue life and pipe strength by randomly scattering indentations
- Prevents creation of pits containing iron or steel, which can contaminate the surface of CRA tubulars causing rapid, premature corrosion failure
- Has a uniform coated surface with optimal dimensional control
- Offers superior gripping capacity—the high hardness of coating components (approx 92 HRA) grips “Super” and “Hyper” chrome alloys oxide coatings more effectively than carburized teeth (both are approx 62 HRC)
- Has higher torque capabilities

McCoy's standard is used by several premium pipe manufacturers. We define 4.5% of wall thickness as a maximum allowable surface indentation for normal tubular gripping applications. The greatest indentation depth documented in testing to date is 3.54%, with typical depths ranging from 1.45% to 2.9%.

GRITFACE® coating for tong dies and handling tool inserts is field-proven to last longer than hardened steel dies and inserts used with high-strength tubulars:

- Used to run most CRA tubulars in North Sea since 1997 and now used worldwide
- Used on tubulars from 1-3/50" to 13-3/8"
- Heaviest string run to date weighs in excess of 250 tons
- Heaviest lab test to date is 400 tons on 7"-35PPF 22% Cr 125ksi tubing
- Used with expandable tubulars

Over 155 GRITFACE® inserts are available for almost every handling tool and safety clamp, eliminating the need for specially adapted equipment and increasing the utilization of your handling tool inventory. In the field, our dies and inserts reduce operator fatigue and keep operators safe because they aren't reaching into tools at each connection. Try GRITFACE® Coating for dies and inserts today.

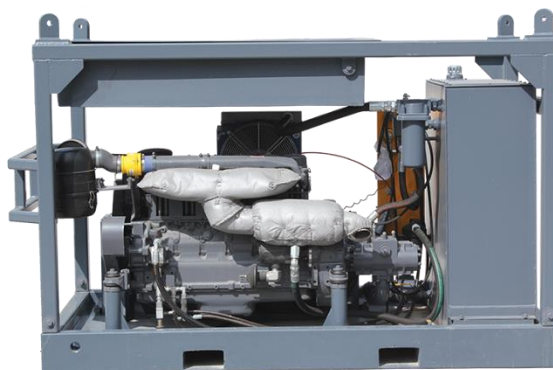
USA Origin

Power Back Unit

Built and certified to the highest industry safety standards with a proven history of success in the field, our power units offer unparalleled performance. Our power back units are designed to provide a reliable power source for a wide range of hydraulic requirements for onshore and offshore applications.

DIESEL DRIVEN HYDRAULIC POWER UNIT SPECIFICATIONS **CANADA Origin**

Description	Specification
Diesel Motor Output	114 HP at 2,300 rpm
Maximum Flow Rate	60 gpm at 1,000 psi
Maximum Pressure	3,000 psi
Hydraulic Oil Capacity	140 US Gal. (530 L)
Diesel Tank Capacity	42 US Gal. (159 L)
Operation Type	Open loop for over-center valve
Decibel Readings: 1.0 meter, 1 minute	94 db (A), 97 db (C)
Overall Length	101-3/4" (385.17 cm)
Overall Width	50" (189.27 cm)
Overall Height	66-3/4" (252.68 cm)
Overall Weight	4,200 lb. (1,905 Kg)



JAM System

Our Joint Analyzed Make-Up unit is designed to enable users to fully monitor thousands of connections in breaking out and making up during the operation, securing against any collapse, thread damage or uncontrolled torque of the drill pipe, collars, heavy and spiral weights, in addition to all casing and tubing accessories. We provide full access of oilfield tubular connection threads such as Vam, Tenaris, Hydril and other thread connections.

USA Origin

Overview

ConTech's Torque Control Systems are used in the makeup of casing, tubing, drill pipe, downhole motors and accessories, etc. ConTech's Torque Turn Systems can be installed and run with virtually any hydraulic, pneumatic, or manual tongs in the field, as well as bucking units in plant applications.

The CT 3000LT Torque Turn System features high resolution graphics with two processors and a choice of four makeup programs.

Technical Specifications

Hardware

- 110/220 Volt Switchable
- Color Monitor
- Display-Torque Digital in Real Time
- Display - Color Graphics in Real Time
- Electronic Dump Valve
- 35 Millisecond Dump Valve Response
- Electronic Load Cell
- Optional Hydraulic Load Cell & Pressure Transducer
- Printing on-Site
- Real Time Clock
- Report - Hard Copy - Color Graphics



Software

- Data Storage Accomplished by Hard Disk
- Maximum Torque Input Value is 999,999 (ft/lbs.)
- Memory Storage capacity (in joints) in standard configuration is 2000(x100)
- Tong RPM graphed in real time

Program Features

- | | |
|-------------------------------------|--|
| ▪ Joint Overlay | - Joint Re-Call (Instant) |
| ▪ Magnification | - All Menu Features accessible @ Test Screen |
| ▪ Torque Shoulder Cursor Identifier | - Sampling Frequency is 2,400 Data Points/Sec. |
| ▪ Self Check Reliability Program | - 1/7500 Turn Resolution via Shaft Encoder |

Fill up Tools

To conserve rig time for our clients during casing running operations, SAKNAFTA® offers its Casing Circulating Fill-up and Flow Back Tool. Our fill up tools are compatible with both the Top Drive and Kelly systems and can run inside casing sizes from 4 1/2" to 20". This system is used for filling up and circulating the casing, and flow back operations which are not performed by system.

Max Pressure 1500 PSI

USA Origin

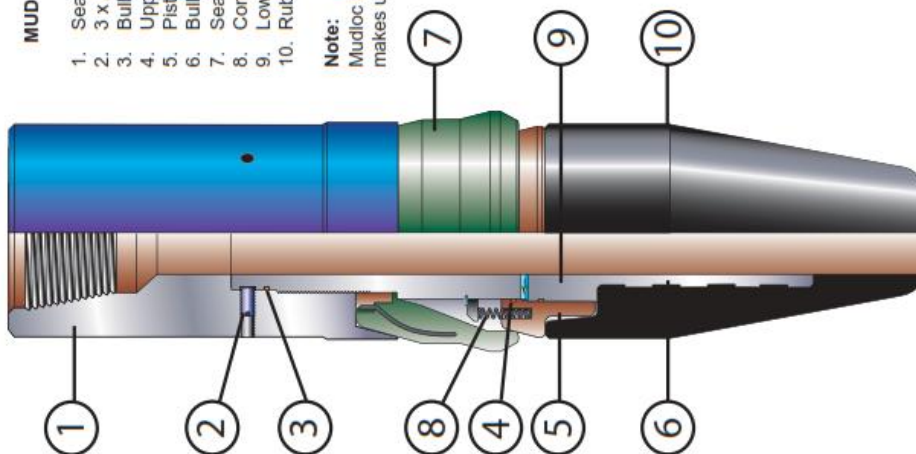




**SPECIALIST DRILLING
TOOLS LTD**
SDT MUD-STINGER



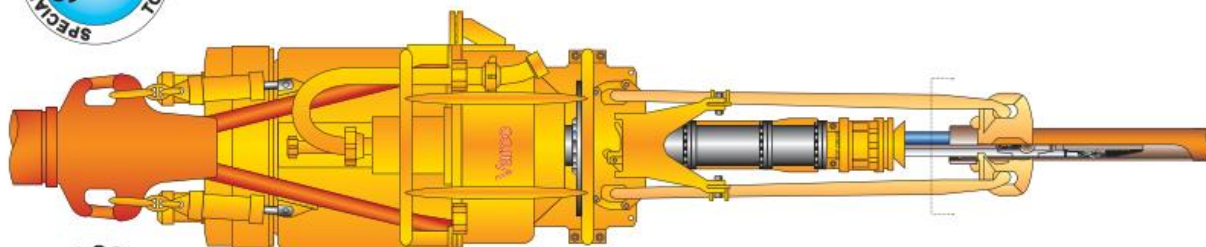
**SPECIALIST DRILLING
TOOLS LTD**
SDT MUD-STINGER



MUD-STINGER COMPONENTS

1. Seal Cup Retainer Sub
2. 3 x Allen Lock Screws
3. Bullnose Mandrel O'Ring
4. Upper Piston Seal
5. Piston
6. Bullnose Mandrel
7. Seal Cup
8. Compression Spring
9. Lower Piston Seal
10. Rubber Bullnose

Note:
Mudloc Mud-Saver Valve (not shown)
makes up above this assembly.



MUD-STINGER OPERATION

PRE RIG-UP PROCEDURE

1. First, check that the seal cup, (pt.no.: 7) is the correct O.D. to suit the casing weight to be run. (Each cup is labelled).
2. Check that all three (3) Allen Screws (pt.no.: 2) are tight.
3. After making up to top-drive, kick in circulating pump and check that the mudloc Mud-Saver is working correctly.
4. Check that the Seal Cup, (pt.no.: 7) is at least level with the bottom of the elevator, this will ensure that the cup is well inside the casing and below the coupling.

SERVICING PROCEDURE

TO CHANGE-OUT SEAL CUP, BULL-NOSE OR PISTON O' RINGS

1. Back-out the three (3) Allen screws, (pt.no.: 2) approx. 1/2"
2. Back off the Bull-Nose Sub, (pt.no.: 10) using a chain tong on the retainer sub, (pt. no.: 1) and another on the Bull-Nose. Separate and remove the Seal Cup, (pt.no.: 7) and the Compression Spring, (pt.no.: 8).
3. Clean and lubricate the Mandrel, (pt.no.: 6) and replace the Compression Spring and new Seal Cup.
4. Check the O' Ring, (pt.no.: 3) and replace if required, remake the the connection using chain tongs, remove one Allen Screw and ensure the Allen Screw groove is in the correct position before re-tightening the three (3) Allen Lock Screws.
5. Should the Piston Seals, (pt.no.: 4 & pt.no: 9) - Fail, carry out steps 1 & 2 above and remove Piston, (pt.no.: 5), clean and lubricate the area. Replace O' Rings and re-assemble.

TO SERVICE MUDLOC MUD-SAVER VALVE
(Refer to "Mudloc" Manual)

NOTE:

It is considered extremely unlikely that the Compression Spring will ever require changing during the life of the tool.

Handling Tools

Our casings handling running tools are sourced to support casing and tubing operations.

This technology provides a safer casing running environment by eliminating high-risk operations.

Furthermore, Handling Tools also prove to be highly effective in reducing hazards on rig floor operations.

We offer quality Rotary Hand Slips and Bowl Slips that are available in sizes ranging from 2 3/8" to 31" equipped with a center latch; side door elevators, spider slips, elevators, Flush Mounted Spiders (FMS) and power slips in a variety of latch types, inserts types and slip assemblies to meet client requirements for sizes ranging from 2 3/8" to 24".



- **BILCO TUBING PRECISION SPIDER SLIPS AND ELEVATOR**

BILCO 150 ton pneumatic tubing spider slips and elevator c/w inserts and wraparound fine teeth dies (Low Marking) for sizes:

2-3/8", 2-7/8", 3-1/2", 4-1/2" and 5".

USA Origin



- **SLIP TYPE ELEVATORS**

HYC

BJ 200 ton HYC slip type center latch elevator for sizes:

4-1/2" and 5".

USA Origin



HYT

BJ 150 ton HYT slip type center latch elevator for sizes:

2-7/8" and 3-1/2".

USA Origin



YT

BJ 75 ton YT slip type center latch elevator for sizes:

2-3/8", 2-7/8" and 3-1/2".

USA Origin



- CASING AND TUBING ELEVATORS



SIDE DOOR ELEVATORS

BJ 200 and 150 ton side door elevators sizes for:

7", 9-5/8", 13-3/8" and 20". **USA Origin**

SINGLE JOINT ELEVATORS

VARCO 5 ton casing and tubing single joint elevators for sizes:

3-1/2", 4-1/2", 5", 7", 9-5/8", 13-3/8" and 20".

USA Origin



NON MARKING SINGLE JOINT ELEVATOR

VARCO 5 ton tubing single joint elevators c/w Aluminum sleeve for 13% Chromium tubing for sizes : 3-1/2", 4-1/2", and 5". **USA Origin**



- **CASING AND TUBING ROTARY SLIPS**
 - **CASING ROTARY HAND SLIPS**

VARCO 150 ton casing rotary hand slips for sizes: 7", 9-5/8", 13-3/8" and 20".

USA Origin



TUBING ROTARY HAND SLIPS

VARCO 150 ,100 & 75 ton tubing rotary hand

slips for sizes: 2-3/8", 2-7/8", 3-1/2", 4-1/2" and 5".

USA Origin



DEN-CON TS-150 PNEUMATIC TUBING SPIDER SLIPS

DEN-CON 150 ton pneumatic tubing spider slips for sizes: 2-3/8", 2-7/8", 3-1/2", 4-1/2" and 5". **USA Origin**



- CASING AND TUBING ACCESSORIES

THREADS PROTECTOR

CLAMPON casing threads protector for sizes:

7", 9-5/8", 13-3/8" and 20".

USA Origin



STABBING GUIDES

Stabbing guide for premium connections for sizes:

3-1/2", 4-1/2", 5" and 7".

USA Origin



TEFLON MANDREL DRIFTS

Teflon mandrel drift for premium connections

for sizes: 2-7/8", 3-1/2", 4-1/2" and 5" tubing with different weights.

USA Origin



CASING SAFETY CLAMP

VARCO casing safety clamp for sizes: 3-3/4",

4-1/2", 5", 7", 9-5/8" and 13-3/8".

USA Origin

